



- *ESD Safety*
- *Compact and lightweight*
- *Blower function*
- *Thermal overload protection*
- *Extensive optional accessories*
- *Electronic control (*Optional)*
- *HEPA Motorfilter (*Optional)*

is ideal for detailed cleaning tasks in environments where electrostatic discharge (ESD) protection is essential. This vacuum delivers precise cleaning, reliable ESD safety, and high operational efficiency, making it perfect for use with sensitive electronic equipment and components in various settings.

Technical specifications

Voltage	220-240V 50/60 Hz 120V, 100V 50/60 Hz
Power	800W (±10%)
Housing material	PP
Typical bleeder resistance	$10^7 - 10^9$ Ohm
ESD Safety	IEC 61340-5-1 Compliant
Max. suction power	160 mbar
Max. airflow	35 l/s
Max. noise level	80 dB
Weight	2.2 kg
Dimensions	31.5 x 12 x 18.5 cm
Hose diameter	32 mm
Detachable power cord	C13 – Schuko/UK
Filter bag capacity	1.2 l

Scope of delivery

- 3 m power cord
- Leather shoulder strap
- 50 cm stretch hose (ratio 3:1)
- Crevice nozzle
- Rubber nozzle
- 5-ply meltblown filterbag
- Micro motorfilter
- HEPA Micro motor filter (*optional)



Meltblown filterbagset (5 pcs)



Meltblown filterbagset (10 pcs)



Micro motorfilter



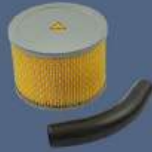
HEPA Micro motorfilter



HEPA Activated carbon motorfilter



High-capacity HEPA exit filter (no adapter)



High-capacity HEPA exit filter (incl. adapter)



Original hose assembly (0.5m)



Double length hose assembly (1m)



Super stretch hose assembly (2m)



Two-part blow assembly (0.7m)



Two-part blow assembly long (1.2m)



Carrying bag (*NON-ESD!*)



Carrying case (low)



Carrying case (high)