

TECHNICAL DATA

Fluke FEV500 Fast DC EV Charging Station Analyzer



Test, validate, and document Fast DC charging stations with one portable analyzer.

The Fluke FEV500 is a field-ready, advanced analyzer that streamlines the testing of Fast DC EV charging stations by combining essential safety and performance checks into a single device. Designed for ease of use, it simplifies the evaluation process without the need for additional test and measurement equipment, ensuring that EVSE (Electric Vehicle Supply Equipment) remains safe and operational. The FEV500 has an intuitive interface and features seamless software integration, making it easier for technicians to troubleshoot, manage data, and maintain EVSE uptime with confidence and efficiency.

The FEV500 is compliant with ISO 15118 and DIN SPEC 70121 international standards for the digital communication between electric vehicles and electric vehicle supply equipment. It has been tested for compatibility with major EVSE manufacturers.

ALL-IN-ONE FAST DC TESTING

Combines performance, interoperability and safety measurement features into a single, portable device, no need for multiple tools or complex setups.

BUILT-IN EV SIMULATION

Simulates real EV charging up to 2kW. No external load banks or vehicles required, enabling complete station validation anytime, anywhere.

RUGGED, FIELD-READY DESIGN

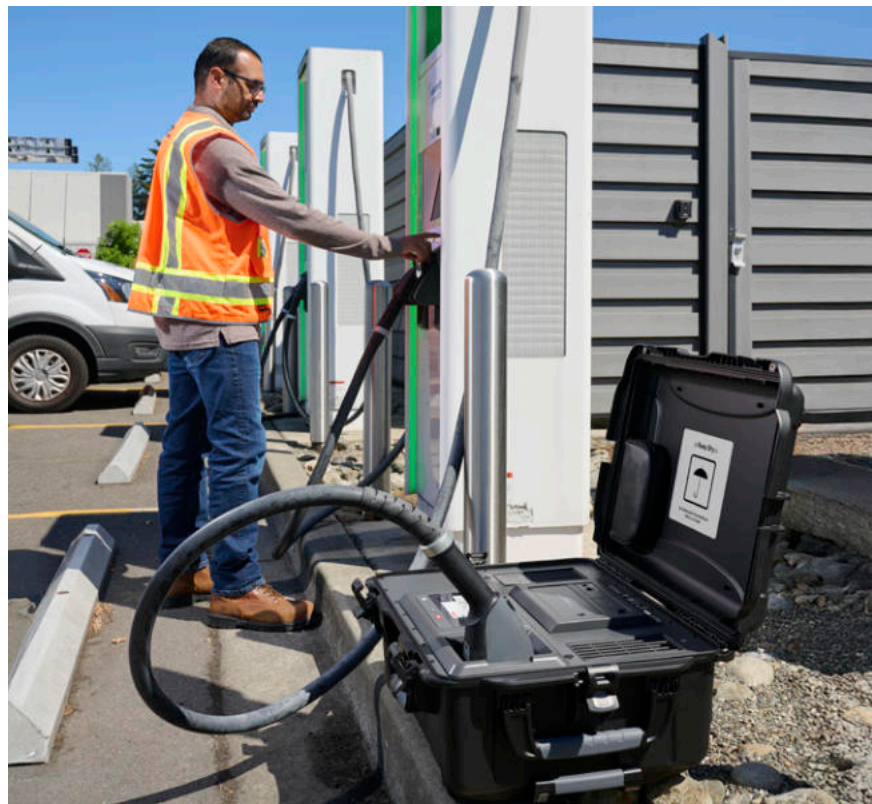
Engineered for durability and portability with integrated wheels and handle, ideal for demanding on-site testing. The battery is removable for easy airline transport.

VIEW REAL TIME REPORTS ON THE FEV500

Seamless integration with Fluke TruTest™ software for instant documentation, compliance reporting, and actionable maintenance insights.

BATTERY-POWERED FOR TRUE MOBILITY

No wall outlet required. The battery recharges via energy harvesting during EVSE load tests for extended field use.



Fluke FEV500 Fast DC EV Charging Station Analyzer



Performance and Safety Tests:

Communication & Performance:

- CCS Charge State Verification
- Signal Level Attenuation Characterization (SLAC)
- Low-Level Communication Testing for CCS
- Power Line Communication (PLC) Testing
- Load Testing (Voltage & Current during simulated charging)

Electrical Safety:

- Insulation Resistance (IEC 61557-2)
- Low Impedance Measurement (IEC 61557-4)
- IMD Test (Insulation Monitoring Device, IEC 61557-8)
- Residual Voltage Measurement (IEC 61851-1)

Key Features

- **Comprehensive Testing:** Performance and safety testing combined in one device.
- **EV Simulation, No External Equipment Needed:** Simulates electric vehicle charging during testing, eliminating the need for additional load banks, electric vehicles or multifunction testers. Verifies charging station operability and performance by simulating a kW load to mimic real charging sessions.
- **Autotest Feature:** Run pre-configured test sequences with automatic execution and clear pass/fail results. No need to use other equipment or reconfigure test leads.
- **User-Friendly Interface:** Intuitive touchscreen display visible in bright sunlight with guided workflows and for easy operation and interpretation of results.
- **CCS Connectivity:** Supports CCS connectors for widespread compatibility. Available in CCS1 or CCS2 models.
- **Portable and Durable:** Rugged design ideal for field use, with a removable, rechargeable battery, no outlet required.
- **Automatic Data Management:** Tracks and stores unique EVSE and connection point IDs for streamlined asset management.
- **TruTest™ Software:** Facilitates documentation and reporting of results.



Streamline Fast DC EV Charging inspections using one integrated tool

Other EVSE test tools often only support vehicle simulation and require other test equipment to perform a full inspection. This requires reconfiguration of test leads and the need to bring multiple devices on-site. Managing multiple devices can lead to inefficiencies, increased test time and higher likelihood of human error. The FEV500 consolidates all recommended electrical inspection steps into a single portable device. Technicians can test continuity, insulation, check IMDs (insulation monitoring devices), and residual voltage all through the EVSE connector without the need to use other devices.



EVSE Validation: Independent, Precise Testing Without an EV On-Site

As electric vehicles become the norm, ensuring the reliability and performance of EV charging infrastructure is more critical than ever. Traditional validation methods often rely on the presence of an actual EV, which can limit flexibility and delay testing—especially in remote areas or during maintenance windows.

The Fluke FEV500 empowers technicians with a smarter approach: it simulates an EV, enabling comprehensive testing of charging and communication protocols without needing a vehicle on-site. This independence streamlines workflows, reduces downtime, and allows for repeatable diagnostics under controlled conditions. Technicians can replicate specific charging scenarios, verify protocol compliance, and troubleshoot issues with precision—anytime, anywhere.

By decoupling EVSE validation from vehicle availability, the FEV500 supports proactive infrastructure readiness for a fully electric future.



Simplify Every Step of Fast DC Charger Testing

The Fluke FEV500 streamlines Fast DC EVSE testing by combining safety, performance, and interoperability checks into one compact, field-ready tool. Its guided testing workflow walks technicians step-by-step through each protocol, ensuring consistency, confidence, and faster results, no matter what their experience level is. The FEV500 delivers EV-free validation, simulating real charging sessions and communication without needing a vehicle on-site, while error simulation verifies that safety systems respond correctly to faults. Designed for the field, it is portable, durable, and battery operated, with wheels and a handle for easy transport and no need for external power. The analyzer also consolidates multiple instruments— EV, protocol analyzer, low-ohm meter and oscilloscope —into a single device for complete non-invasive testing without opening the charger. Test data is automatically captured and transferred to TruTest™ software, eliminating manual entry and simplifying documentation for compliance and reporting. With the FEV500, technicians can test smarter, safer, and faster, anywhere the job takes them.



Automated Documentation: Removes the Need for Manual Data Entry

Manual data entry is a time-consuming and error-prone process that can lead to inaccuracies in test documentation, complicating maintenance records and compliance reporting. Technicians must often transcribe test results by hand from multiple test tools, which not only slows down the workflow but also increases the risk of data loss or incorrect entries.

The Fluke FEV500 automates the documentation process. Test results are automatically recorded and stored within the device and can be easily transferred to TruTest™ software via USB-C for further analysis and report generation. This automation eliminates the need for manual data entry, ensuring that all test results are accurately captured and documented. It also streamlines compliance reporting and maintenance planning, providing reliable, traceable records that can be accessed and shared as needed. This not only saves time but also enhances the overall efficiency and accuracy of the testing process.



Test Point	Result	Limits / Conditions	Time
Test Point 1	78 mΩ	< 100 mΩ	
Insulation Resistance			
FEV500 Test Voltage			
Input Test Voltage	1041 V		10/30/2025 9:25:52 AM
DC+ to PE	46.47 MΩ	> 0.1 MΩ	
DC- to PE	46.42 MΩ	> 0.1 MΩ	
Load Test			
EV Charging Simulation			
Voltage	255.9 V	200 V - 350 V	10/30/2025 9:27:21 AM
Current	7.1 A	5.5 A - 8.5 A	
Power	1.8 kW	1.5 kW - 2.4 kW	
IMD Test			
No Trip Test			
Input Resistance	280 kΩ		10/30/2025 9:27:35 AM
Total Time	0 s		
Error State Test			
Input Resistance	95 kΩ		10/30/2025 9:27:43 AM
Total Time	7 s	< 15 s	
Residual Voltage Test			

General Specifications

Specification	Characteristic
Display	7-inch capacitive touchscreen (1024 x 600) Brightness up to 1,700 cd/m ² (auto-adjusted)
Keys	Power on/off, Backlight, Stop Test
LED Indicators	Green: Power on Red: Low battery Blue: Charging Amber: Fan active when device is off
USB-C Ports	USB-C power delivery charging, Flash drive TruTest™ connection, Calibration
GNSS	Global navigation satellite receiver with internal antenna for time synchronization
Dimensions	650 × 508 × 300 mm (25.6 × 20 × 11.8 in)
Weight	26 kg (57.3 lb)
Battery Type	Li-ion RRC2040-2 (customer replaceable)
Battery Capacity	10.8 V, 6.8 Ah, 73.44 Wh
Battery Runtime	10 hours (recharges during test)
Charging Time	3 hours (with 65W USB-C PD)
Battery Backup Time Before Recharging Required	6 months
Fuse	11 A (not customer replaceable)
Warranty	2 years

Environmental Specifications

Operating Temperature	-20 °C to 50 °C (-4 °F to 122 °F)
Storage Temperature	-20 °C to 60 °C (-4 °F to 140 °F) 0 °C to 30 °C (32 °F to 86 °F) recommended
Operating Humidity	IEC 60721-3-3: 3K6 -25 °C to 30 °C (-13 °F to 86 °F): ≤100 % 40 °C (104 °F): 55 % 50 °C (122 °F): 35 %
Operating Altitude	3000 m
Storage Altitude	12000 m
Vibration	IEC 60721-3-3 / 3M2
Ingress Protection	IEC 60529
Ingress Protection, Lid Closed	IP54
Safety	IEC 61010-1: Pollution Degree 2
Charging Temp (Battery)	0 °C to 45 °C (32 °F to 113 °F)

Electrical Specifications

Value	Range	Resolution	Accuracy
Voltage	1,000 V	0.1 V	+/- (0.2% + 4 digits)
Current	10 A	0.01 A	+/- (0.5% + 5 digits)
Power	0 to 3.75 kW	1 W	± (0.7% rdg + 2 digit)

IMD Test			
No Trip Test	250 kΩ, asymmetric insulation resistance DC+ to PE		
Trip Test	95 kΩ (max. EVSE Voltage >500 V dc) 45 kΩ (max. EVSE Voltage ≤500 V dc), asymmetric insulation resistance DC- to PE		
Time per test	<15s		
Standard	IEC 61557-8 / IEC 61557-18		

Continuity (R _{Lo}) Test Lead to PE (CCS)			
Test current: max 10 A	2 Ω	<1 Ω: 0.1 mΩ ≥1 Ω: 0.0001 mΩ	≤20 mΩ: ±(8% + 0.8 mΩ) ≤200 mΩ: ±(4% + 4 mΩ) >200 mΩ: ±(4% + 40 mΩ)
Standard	IEC 61557-4		

Insulation Resistance DC+ to PE and DC- to PE			
Test Voltage	+ / -		
500 V	10 kΩ to 20 MΩ	0.01 MΩ	± (5 % rdg + 2 digit)
1000 V	10 kΩ to 20 MΩ	0.01 MΩ	± (5 % rdg + 2 digit)
Max Short Circuit Current	2 mA		
Standard	IEC 61557-2		

CP Test (CCS 1, CCS2)			
Simulation of States	A, B, C, D, E		
CP High, CP Low	15 V .. +15 V	0.01 V	± (0.4 % rdg + 2 digit)
Frequency Measurement	DC 900 Hz to 1100 Hz	1 Hz	0.1% or 1 digit
Duty Cycle	2 ... 98 %	0.10%	±5 digit
PP Resistor	50.0 .. 499.9 Ω 500 to 5000 Ω	0.1 Ω 1 Ω	±0.5 %
Digital Protocol	DIN 70121, ISO 15118		
SLAC	0 dB to 20 dB	1 dB	

Fluke Built, Fluke Protected

Reduce unplanned expenses and get the most out of your tools with Premium Care

Premium Care provides coverage above and beyond your tool's original product warranty, so you don't need to worry about unexpected downtime caused by damaged test equipment, accessories, or tools in need of calibration or repair.

Premium Care is available in one-year and three-year options so you can choose the plan that is right for you.

	Standard Warranty	Premium Care
Repair manufacturing defects	✓	✓
Accidental damage and repair		✓
Replacement of damaged accessories		✓
Annual calibration or performance check		✓
Expedited calibration and repair		✓
Priority tech support		✓
Expedited freight		✓



PremiumCare

Uptime Protection by **FLUKE**



Repair manufacturing defects

Ensuring that your equipment functions as intended maintains accuracy and reliability, thereby reducing downtime and ensuring the longevity of your Fluke product.



Accidental damage and repair

Avoid costly repairs and rest easy knowing your test tool is covered.



Replacement of damaged accessories

Accessories that originally shipped with your unit, like batteries, power adapters, probes and cables, and have been qualified as defective by our technicians will be replaced, free of charge.



Annual calibration or performance check

Ensure your test tool is providing accurate results and adheres to the recommended maintenance schedule by leaving it in the hands of our experts.



Expedited calibration and repair

Your calibration or repair will be expedited so you can get back to your work faster.



Expedited shipping

Accelerates the shipping process and reduces the time your equipment spends in transit. By minimizing the overall turnaround time, we can ensure that your product is back in your hands and operational as quickly as possible.



Priority tech support

Ensures prompt assistance and resolution of technical issues, minimizing downtime by quickly addressing any problems or concerns with your equipment.



Find out more at:
www.fluke.com/en-gb/support/customer-services/premium
or contact your local Fluke authorized distributor

See the Terms & Conditions for more information. Prices subject to change without notice.



Model - CCS2	Description
FLK-FEV500/CCS2	FAST DC CHARGING STATION ANALYZER, CCS2
FLK-FEV500/CCS2 PRO	FAST DC CHARGING STATION ANALYZER, CCS2 W/ TRUTEST SOFTWARE
FLK-FEV500-CCS2/FPC	FLK-FEV500/CCS2 with 1 YR PREMIUM CARE STANDARD
FPC1S-FEV500-1	1 YR FLUKE PREMIUM CARE STANDARD FOR FEV500 Series
FPC3S-FEV500-1	3 YR FLUKE PREMIUM CARE STANDARD FOR FEV500 Series

Fluke. Keeping your world up and running.™

[Fluke.com](https://www.fluke.com)

©2026 Fluke Corporation.
Specifications subject to change without notice.
250536-en

Modification of this document is not permitted without written permission from Fluke Calibration.

Visit [fluke.com](https://www.fluke.com) to get complete details about these products or ask your local Fluke sales representative.