



MSO/DS2000A Series Digital Oscilloscope

UltraVision

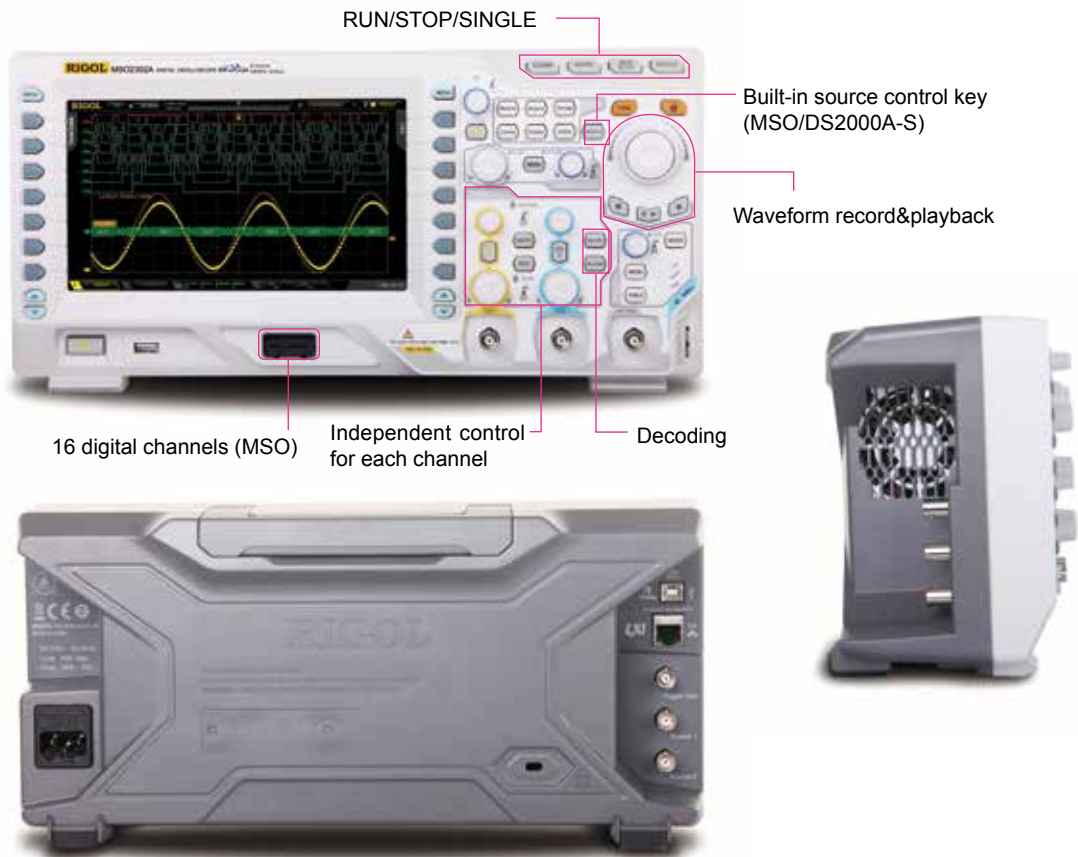
- Bandwidth up to 300 MHz, standard with 50 Ω input
- 2 analog channels, 16 digital channels (MSO)
- Lower noise floor, wider vertical range: 500 uV/div~10 V/div
- Real-time Sample Rate: analog channel up to 2 GSa/s, digital channel up to 1 GSa/s (MSO)
- Memory Depth: analog channel up to 14 Mpts (standard)/56 Mpts (optional), digital channel up to 14 Mpts (standard)/28 Mpts (optional)
- Innovative "UltraVision" technology
- Waveform capture rate up to 50,000 wfms/s
- Up to 256 levels intensity grading waveform display
- Up to 65,000 frames hardware real-time waveform record, playback and analysis functions (standard)
- A variety of trigger and bus decoding functions (Parallel, RS232, I2C, SPI, CAN)
- Built-in dual-channel 25 MHz signal source (MSO/DS2000A-S)
- Complete connectivity: USB Host&Device, LAN (LXI), AUX, USB-GPIB (optional)
- 8 inch TFT (800x480) WVGA

MSO/DS2000A series is the new mainstream digital scope to meet the customer's applications with its innovative technology. MSO2000A series has 2+16 channels, target for the embedded design and test market with its industry leading specifications, powerful trigger functions and broad analysis capabilities.

RIGOL TECHNOLOGIES, INC.

Batter Fly s.r.l. - Tel. +39 051 6468377 - info@batterfly.com - www.batterfly.com - Italy

MSO/DS2000A Series Digital Oscilloscope



Product Dimensions: Width×Height×Depth = 361.6 mm×179.6 mm×130.8 mm
Weight: 3.9 kg±0.5 kg (Without Package)

► Innovative UltraVision Technology (Analog Channel)



- Deeper memory depth (up to 56 Mpts)
- Higher waveform capture rate (up to 50,000 wfms/s)
- Real-time waveform record, playback and analysis functions (up to 65,000 frames)
- Multi-level intensity grading display (up to 256 levels)

► Models and Key Specifications

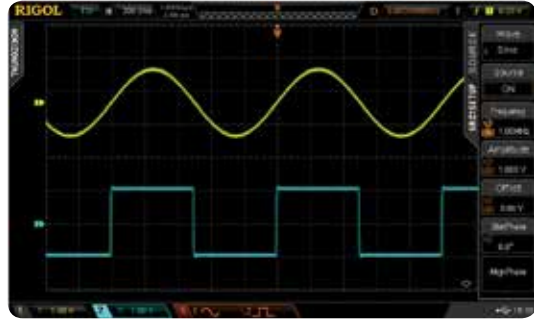
Model	DS2072A	DS2072A-S	DS2102A	DS2102A-S	DS2202A	DS2202A-S	DS2302A	DS2302A-S
	MSO2072A	MSO2072A-S	MSO2102A	MSO2102A-S	MSO2202A	MSO2202A-S	MSO2302A	MSO2302A-S
Analog BW	70 MHz		100 MHz		200 MHz		300 MHz	
Number of Analog Channels	2							
Number of Digital Channels (MSO)	16							
Max. Real-time Sample Rate	Analog channel: 2 GSa/s (single-channel), 1 GSa/s (dual-channel) Digital channel: 1 GSa/s (8-channel), 500 MSa/s (16-channel)							
Max. Memory Depth	Analog channel: 14 Mpts (single-channel), 7 Mpts (dual-channel) standard; 56 Mpts (single-channel), 28 Mpts (dual-channel) optional Digital channel: 14 Mpts (8-channel), 7 Mpts (16-channel) standard; 28 Mpts (8-channel), 14 Mpts (16-channel) optional							
Max. Waveform Capture rate	50,000 wfms/s							
Hardware Real-time Waveform Record, Playback and Analysis Functions	Up to 65,000 Frames (LA channels turned off) Up to 32,000 Frames (LA channel(s) turned on)							
Standard Probes	RP3300A 350MHz BW Passive Probe: 2 sets; 1 set RPL2316 LA Probe (MSO only)							
Built-in Dual-channel 25 MHz Source	No	Yes	No	Yes	No	Yes	No	Yes

► Features and Benefits

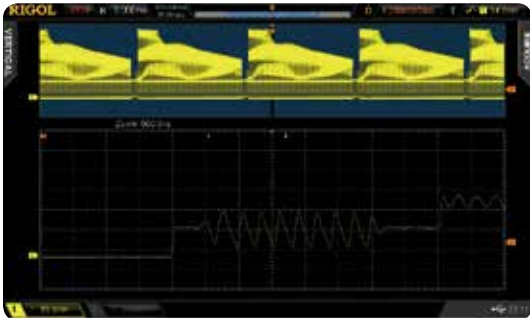
Wider vertical range (500 uV/div~10 V/div), lower noise floor, better for small signal capturing



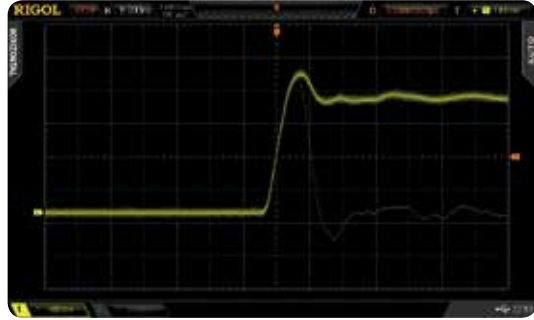
Built-in dual-channel 25 MHz source (MSO/DS2000A-S)



UltraVision: deeper memory (analog channel up to 14 Mpts (standard)/56 Mpts (optional))



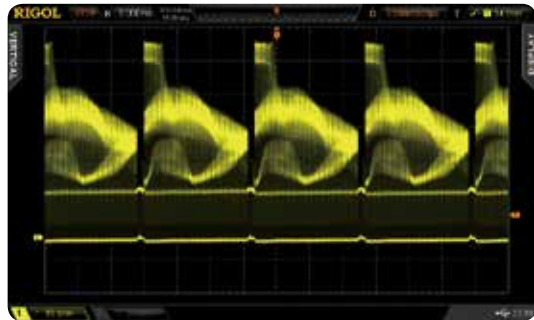
UltraVision: up to 50,000 wfms/s waveform capture rate



UltraVision: real-time waveform record, playback and analysis functions



UltraVision: multi-level intensity grading display (up to 256 levels)



Serial bus trigger&decoding functions (RS232, I2C, SPI, CAN)



Versatile trigger functions (Runt, Nth Edge, Setup/Hold...)



► **MSO2000A Series Mixed Signal Oscilloscope**



Besides the powerful functions of DS2000A, you could get more from MSO2000A with:

- 16 digital channels
- Sample rate of digital channel up to 1 GSa/s
- Memory depth of digital channel up to 28 Mpts
- Waveform capture rate of digital channel up to 50,000 wfms/s
- Hardware real-time waveform record and playback functions, up to 65,000 frames can be recorded
- Triggering and decoding across analog and digital channels
- Easy grouping and group operation of the digital channels
- Supports a variety of logic levels
- Up to 2+16 channels; trigger across the analog and digital channels
- Time correlated display and analysis for both the analog and digital channel waveforms

Innovative UltraVision Technology (Digital Channel)



- Deeper memory depth (up to 28 Mpts)
- Higher waveform capture rate (up to 50,000 wfms/s)
- Real-time waveform record and playback functions (up to 65,000 frames)
- Multi-level intensity grading display

Mixed signal analysis with analog and digital channels



Easy to be grouped and labeled for digital channels



Deeper memory depth for the digital channels, serial bus triggering and decoding on digital channels



Supports a variety of logic levels



RIGOL Probes Supported by MSO/DS2000A Series:

► RIGOL Passive Probes

Model Number	Type	Description
 RP2200	High Z Probe	1X: DC to 7 MHz 10X: DC to 150 MHz Compatibility: all RIGOL scopes.
 RP3300A	High Z Probe	10X: DC to 350 MHz Compatibility: all RIGOL scopes.
 RP3500A	High Z Probe	DC to 500 MHz Compatibility: all RIGOL scopes.
 RP1300H	High Voltage Probe	DC to 300 MHz CAT I 2000 V (DC+AC), CAT II 1500 V (DC+AC) Compatibility: all RIGOL scopes.
 RP1010H	High Voltage Probe	DC to 40 MHz DC: 0 to 10 kV DC, AC: pulse ≤ 20 kVp-p, AC: sine wave ≤ 7 kVrms Compatibility: all RIGOL scopes.
 RP1018H	High Voltage Probe	DC to 150 MHz DC+AC Peak: 18 kV CAT II AC RMS: 12 kV CAT II Compatibility: all RIGOL scopes.
 RPL2316	Logic analysis Probe	Logic analysis probe (for MSO4000&MSO2000A)

► RIGOL Active & Current Probes

Model Number	Type	Description
 RP1001C	Current Probe	BW: DC to 300 kHz Max. input DC: ± 100 A, AC P-P: 200 A, AC RMS: 70 A Compatibility: all RIGOL scopes.
 RP1002C	Current Probe	BW: DC to 1 MHz Max. input DC: ± 70 A, AC P-P: 140 A, AC RMS: 50 A Compatibility: all RIGOL scopes.
 RP1003C	Current Probe	BW: DC to 50 MHz Max. input AC P-P: 50 A (noncontinuous), AC RMS: 30 A Compatibility: all RIGOL scopes. Must order RP1000P power supply.
 RP1004C	Current Probe	BW: DC to 100 MHz Max. input AC P-P: 50 A (noncontinuous), AC RMS: 30 A Compatibility: all RIGOL scopes. Must order RP1000P power supply.
 RP1005C	Current Probe	BW: DC to 10 MHz Max. input AC P-P: 300 A (noncontinuous), 500 A (@pulse width ≤ 30 us), AC RMS: 150 A Compatibility: all RIGOL scopes. Must order RP1000P power supply.
 RP1000P	Power Supply	Power supply for RP1003C, RP1004C and RP1005C, support 4 channels.
 RP1025D	High Voltage Differential Probe	BW: 25 MHz Max. voltage ≤ 1400 Vpp Compatibility: all RIGOL scopes.
 RP1050D	High Voltage Differential Probe	BW: 50 MHz Max. voltage ≤ 7000 Vpp Compatibility: all RIGOL scopes.
 RP1100D	High Voltage Differential Probe	BW: 100 MHz Max. voltage ≤ 7000 Vpp Compatibility: all RIGOL scopes.

► Specifications

All the specifications are guaranteed except the parameters marked with "Typical" and the oscilloscope needs to operate for more than 30 minutes under the specified operation temperature.

Sample

Sample Mode	Real-time Sample
Real-time Sample Rate	Analog channel: 2 GSa/s (single-channel), 1 Gsa/s (dual-channel) Digital channel: 1 GSa/s (8-channel), 500 MSa/s (16-channel)
Peak Detect	Analog channel: 500 ps (single-channel), 1 ns (dual-channel) Digital channel: 1 ns (8-channel), 2 ns (16-channel)
Averaging	After all the channels finish N samples at the same time, N can be 2, 4, 8, 16, 32, 64, 128, 256, 512, 1024, 2048, 4096 or 8192.
High Resolution	12 bits of resolution when $\geq 5 \mu\text{s}/\text{div}$ @ 1 GSa/s (or $\geq 10 \mu\text{s}/\text{div}$ @ 500 MSa/s).
Minimum Detectable Pulse Width	Digital channel: 5 ns
Memory Depth	Analog channel: Single-channel: Auto, 14 kpts, 140 kpts, 1.4 Mpts, 14 Mpts and 56 Mpts (optional) are available Dual-channel: Auto, 7 kpts, 70 kpts, 700 kpts, 7 Mpts and 28 Mpts (optional) are available Digital channel: 14 Mpts (8-channel), 7 Mpts (16-channel) standard; 28 Mpts (8-channel), 14 Mpts (16-channel) optional

Input

Number of Channels	MSO2XX2A/2XX2A-S: 2 analog channels+16 digital channels DS2XX2A/2XX2A-S: 2 analog channels
Input Coupling	DC, AC or GND
Input Impedance	Analog channel: $(1 \text{ M}\Omega \pm 1\%) \parallel (16 \text{ pF} \pm 3 \text{ pF})$ or $50 \Omega \pm 1.5\%$ Digital channel: $(101 \text{ k}\Omega \pm 1\%) \parallel (9 \text{ pF} \pm 1 \text{ pF})$
Probe Attenuation Coefficient	Analog channel: 0.01X to 1000X, in 1-2-5 step
Maximum Input Voltage (1 M Ω)	Analog channel: CAT I 300 Vrms, CAT II 100 Vrms, transient overvoltage 1000 Vpk with RP2200 10:1 probe: CAT II 300 Vrms with RP3300A 10:1 probe: CAT II 300 Vrms with RP3500A 10:1 probe: CAT II 300 Vrms with RP5600A 10:1 probe: CAT II 300 Vrms Digital channel: CAT I 40 Vrms, transient overvoltage 800 Vpk

Horizontal

Time Base Scale	MSO/DS2302A/2302A-S: 1.000 ns/div to 1.000 ks/div MSO/DS2202A/2202A-S: 2.000 ns/div to 1.000 ks/div MSO/DS2102A/2102A-S/2072A/2072A-S: 5.000 ns/div to 1.000 ks/div
Channel to Channel Skew	1 ns (typical), 2 ns (maximum)
Maximum Record Length	14 Mpts (standard), 56 Mpts (optional)
Time Base Accuracy ^[1]	$\leq \pm 25 \text{ ppm}$
Time Base Drift	$\leq \pm 5 \text{ ppm/year}$
Maximum Delay Range	Memory Depth/Sample Rate
Time Base Mode	Y-T, X-Y, Roll
Number of X-Ys	1 path
Waveform Capture Rate ^[2]	50,000 wfms/s (dots display)

Vertical

Bandwidth (-3 dB) (50 Ω)	MSO/DS2302A/2302A-S: DC to 300 MHz MSO/DS2202A/2202A-S: DC to 200 MHz MSO/DS2102A/2102A-S: DC to 100 MHz MSO/DS2072A/2072A-S: DC to 70 MHz
Single Bandwidth (50 Ω)	MSO/DS2302A/2302A-S: DC to 300 MHz MSO/DS2202A/2202A-S: DC to 200 MHz MSO/DS2102A/2102A-S: DC to 100 MHz MSO/DS2072A/2072A-S: DC to 70 MHz
Vertical Resolution	Analog channel: 8 bit Digital channel: 1 bit
Vertical Scale ^[3]	When the input impedance is 50 Ω: 500 μV/div to 1 V/div When the input impedance is 1 MΩ: 500 μV/div to 10 V/div
Offset Range	When the input impedance is 50 Ω: 500 μV/div to 50 mV/div: ±2 V 51 mV/div to 200 mV/div: ±10 V 205 mV/div to 1 V/div: ±12 V When the input impedance is 1 MΩ: 500 μV /div to 50 mV/div: ±2 V 51 mV/div to 200 mV/div: ±10 V 205 mV/div to 2 V/div: ±50 V 2.05 V/div to 10 V/div: ±100 V
Bandwidth Limit ^[1]	MSO/DS2302A/2302A-S/2202A/2202A-S: 20 MHz/100 MHz MSO/DS2102A/2102A-S/2072A/2072A-S: 20 MHz
Low Frequency Response (AC Coupling, -3 dB)	≤5 Hz (on BNC)
Calculated Rise Time ^[1]	MSO/DS2302A/2302A-S: 1.2 ns MSO/DS2202A/2202A-S: 1.8 ns MSO/DS2102A/2102A-S: 3.5 ns MSO/DS2072A/2072A-S: 5 ns
DC Gain Accuracy ^[3]	±2% full scale
DC Offset Accuracy	±0.1 div ± 2 mV ± 1% offset value
Channel to Channel Isolation	DC to maximum bandwidth: >40 dB

Vertical (Digital Channel)

Threshold	1 group with 8 channels adjustable threshold
Threshold Selection	TTL (1.4 V)
	5.0 V CMOS (+2.5 V)
	3.3 V CMOS (+1.65 V)
	2.5 V CMOS (+1.25 V)
	1.8 V CMOS (+0.9 V)
	ECL (-1.3 V)
	PECL (+3.7 V)
	LVDS (+1.2 V)
	0 V
	User
Threshold Range	±20.0 V, in 10 mV step
Threshold Accuracy	±(100 mV + 3% of threshold setting)
Dynamic Range	±10 V + threshold
Minimum Voltage Swing	500 mVpp
Input Impedance	//101 kΩ
Probe Loading	≈8 pF
Vertical Resolution	1 bit

Trigger

Trigger Level Range	Internal: ± 5 div from center of the screen EXT: ± 4 V
Trigger Mode	Auto, Normal, Single
Holdoff Range	100 ns to 10 s
High Frequency Rejection ^[1]	75 kHz
Low Frequency Rejection ^[1]	75 kHz
Trigger Sensitivity ^[1]	1 div (below 10 mV or noise rejection is enabled) 0.3 div (above 10 mV and noise rejection is disabled)
Edge Trigger	
Edge Type	Rising, Falling, Rising/Falling
Pulse Trigger	
Pulse Condition	Positive Pulse Width (greater than, lower than, within specific interval) Negative Pulse Width (greater than, lower than, within specific interval)
Pulse Width Range	2 ns to 4 s
Runt Trigger	
Pulse Condition	None, >, <, <>
Pulse Polarity	Positive, Negative
Pulse Range	2 ns to 4 s
Windows Trigger (Optional)	
Windows Type	Rising, Falling, Rising/Falling
Trigger Position	Enter, Exit, Time
Windows Time	16 ns to 4 s
Nth Edge Trigger (Optional)	
Edge Type	Rising, Falling
Idle Time	16 ns to 4 s
Number of Edges	1 to 65535
Slope Trigger	
Slope Condition	Positive Slope (greater than, lower than, within specific interval) Negative Slope (greater than, lower than, within specific interval)
Time Setting	10 ns to 1 s
Video Trigger (Optional)	
Signal Standard	NTSC, PAL/SECAM, 480P, 576P (standard) 720P, 1080P and 1080I (optional)
Pattern Trigger	
Pattern Setting	H, L, X, Rising Edge, Falling Edge
Delay Trigger (Optional)	
Edge Type	Rising, Falling
Delay Type	>, <, <>, ><
Delay Time	2 ns to 4 s
TimeOut Trigger (Optional)	
Edge Type	Rising, Falling, Rising/Falling
Timeout Time	16 ns to 4 s
Duration Trigger (Optional)	
Pattern Setting	H, L, X
Trigger Condition	>, <, <>
Duration Time	2 ns to 4 s
Setup/Hold Trigger	
Edge Type	Rising, Falling

Data Type	H, L
Setup Time	2 ns to 1 s
Hold Time	2 ns to 1 s
RS232/UART Trigger	
Polarity	Normal, Invert
Trigger Condition	Start, Error, Check Error, Data
Baud	2400 bps, 4800 bps, 9600 bps, 19200 bps, 38400 bps, 57600 bps, 115200 bps, 230400 bps, 460800 bps, 921600 bps, 1 Mbps, User
Data Bits	5 bit, 6 bit, 7 bit, 8 bit
I2C Trigger	
Trigger Condition	Start, Restart, Stop, Missing ACK, Address, Data, A&D
Address Bits	7 bit, 8 bit, 10 bit
Address Range	0 to 127, 0 to 255, 0 to 1023
Byte Length	1 to 5
SPI Trigger	
Trigger Condition	Timeout
Timeout Value	100 ns to 1 s
Data Bits	4 bit to 32 bit
Data Setting	H, L, X
CAN Trigger (Optional)	
Signal Type	Rx, Tx, CAN_H, CAN_L, Differential
Trigger Condition	SOF, EOF, Frame Type, Frame Error
Baud	10 kbps, 20 kbps, 33.3 kbps, 50 kbps, 62.5 kbps, 83.3 kbps, 100 kbps, 125 kbps, 250 kbps, 500 kbps, 800 kbps, 1 Mbps, User
Sample Point	5% to 95%
Frame Type	Data, Remote, Error, Over Load
Error Type	Bit Fill, Answer Error, Check Error, Format Error, Random Error
USB Trigger (Optional)	
Signal Speed	Low Speed, Full Speed
Trigger Condition	SOP, EOP, RC, Suspend, Exit Suspend

Measure

Cursor	Manual Mode	Voltage Deviation between Cursors (ΔV) Time Deviation between Cursors (ΔT) Reciprocal of ΔT (Hz) ($1/\Delta T$)
	Track Mode	Voltage and Time Values of the Waveform Point
	Auto Mode	Allow to display cursors during auto measurement
Auto Measurement	Analog channel: Maximum, Minimum, Peak-Peak Value, Top Value, Bottom Value, Amplitude, Average, Vrms-N, Vrms-1, Overshoot, Pre-shoot, Area, Period Area, Frequency, Period, Rise Time, Fall Time, Positive Pulse Width, Negative Pulse Width, Positive Duty Cycle, Negative Duty Cycle, Delay A \xrightarrow{f} B \xrightarrow{f} , Delay A \xrightarrow{t} B \xrightarrow{t} , Delay A \xrightarrow{f} B \xrightarrow{t} , Delay A \xrightarrow{t} B \xrightarrow{f} , Phase A \xrightarrow{f} B \xrightarrow{f} , Phase A \xrightarrow{t} B \xrightarrow{t} , Phase A \xrightarrow{f} B \xrightarrow{t} , Phase A \xrightarrow{t} B \xrightarrow{f} Digital channel: Frequency, Period, Positive Pulse Width, Negative Pulse Width, Positive Duty Cycle, Negative Duty Cycle, Delay A \xrightarrow{f} B \xrightarrow{f} , Delay A \xrightarrow{t} B \xrightarrow{t} , Delay A \xrightarrow{f} B \xrightarrow{t} , Delay A \xrightarrow{t} B \xrightarrow{f} , Phase A \xrightarrow{f} B \xrightarrow{f} , Phase A \xrightarrow{t} B \xrightarrow{t} , Phase A \xrightarrow{f} B \xrightarrow{t} , Phase A \xrightarrow{t} B \xrightarrow{f}	
Number of Measurements	Display 5 measurements at the same time.	
Measurement Range	Screen Region or Cursor Region	
Measurement Statistic	Current, Average, Max, Min, Standard Deviation, Number of Measurements	
Frequency Counter	Hardware 6 bits frequency counter (channels are selectable)	

Math Operation

Waveform Operation	A+B, A-B, A×B, A÷B, FFT, Digital Filter, Editable Advanced Operation, Logic Operation
FFT Window	Rectangle, Hanning, Blackman, Hamming
FFT Display	Split, Full Screen
FFT Vertical Scale	Vrms, dB
Logic Operation	AND, OR, NOT, XOR
Math Function	Intg, Diff, Lg, Exp, Sqrt, Sine, Cosine, Tangent
Number of Buses for Decoding	2
Decoding Type	Parallel (standard), RS232 (optional), I2C (optional), SPI (optional), CAN (optional)

Display

Display Type	8.0 inches (203 mm) TFT LCD display
Display Resolution	800 horizontal×RGB×480 Vertical Pixel
Display Color	160,000 Color (TFT)
Persistence Time	Min, 50 ms, 100 ms, 200 ms, 500 ms, 1 s, 2 s, 5 s, 10 s, 20 s, Infinite
Display Type	Dots, Vectors
Real-time Clock	Time and Date (user adjustable)

Signal Source (MSO2000A-S/DS2000A-S)

Channels	2	
Sample Rate	200 MSa/s	
Vertical Resolution	14 bits	
Max. Frequency	25 MHz	
Standard Waveform	Sine, Square, Pulse, Ramp, Noise, DC	
Built-in Waveform	Sinc, Exponential Rise, Exponential Fall, ECG, Gauss, Lorentz, Haversine	
Sine	Frequency Range	100 mHz to 25 MHz
	Flatness	±0.5 dB (relative to 1 kHz)
	Harmonic Distortion	-40 dBc
	Stray (Non-harmonic)	-40 dBc
	Total Harmonic Distortion	1%
	S/N Ratio	40 dB
Square/Pulse	Frequency Range	Square: 100 mHz to 15 MHz Pulse: 100 mHz to 1 MHz
	Rise/Fall Time	<15 ns
	Overshoot	<5%
	Duty Cycle	Square: 50% Pulse: 10% to 90% (user adjustable)
	Duty Cycle Resolution	1% or 10 ns (the larger of the two)
	Min. Pulse Width	20 ns
	Pulse Width Resolution	10 ns or 5 bits (the larger of the two)
Jitter	500 ps	
Ramp	Frequency Range	100 mHz to 100 kHz
	Linearity	1%
	Symmetry	0 to 100%
Noise	Bandwidth	25 MHz (typical)
Built-in Waveform	Frequency Range	100 mHz to 1 MHz

Arbitrary Waveform	Frequency Range	100 mHz to 10 MHz
	Waveform Length	1 to 16k points
	Internal Storage Location	10
Frequency	Accuracy	100 ppm (lower than 10 kHz) 50 ppm (higher than 10 kHz)
	Resolution	100 mHz or 4 bits, the larger of the two
Amplitude	Output Range	20 mVpp to 5 Vpp, HighZ 10 mVpp to 2.5 Vpp, 50 Ω
	Resolution	100 μV or 3 bits, the larger of the two
	Accuracy	2% (1 kHz)
DC Offset	Range	±2.5 V, HighZ ±1.25 V, 50 Ω
	Resolution	100 μV or 3 bits, the larger of the two
	Accuracy	Offset setting value ± 2%
Modulation	AM, FM	

I/O

Standard Ports	USB Host (support USB-GPIB), USB Device, LAN, Aux Output (TrigOut/PassFail)
Printer Compatibility	PictBridge

General Specifications

Probe Compensation Output		
Output Voltage ^[1]	About 3 V, peak-peak	
Frequency ^[1]	1 kHz	
Power		
Power Voltage	100 V to 240 V, 45 Hz to 440 Hz	
Power	Maximum 50 W	
Fuse	2 A, T degree, 250 V	
Environment		
Temperature Range	Operating: 0°C to +50°C	
	Non-operating: -40°C to +70°C	
Cooling Method	Fan cooling	
Humidity Range	0°C to +30°C : ≤95% relative humidity	
	+30°C to +40°C : ≤ 75% relative humidity	
	+40°C to +50°C : ≤45% relative humidity	
Altitude	Operating: under 3,000 meters	
	Non-operating: under 15,000 meters	
Physical Characteristics		
Size ^[4]	Width×Height×Depth = 361.6 mm×179.6 mm×130.8 mm	
Weight ^[5]	Package Excluded	3.9 kg±0.5 kg
	Package Included	4.5 kg±0.5 kg
Calibration Interval		
The recommended calibration interval is one year.		
Regulatory Information		
Electromagnetic Compatibility	2004/108/EC Execution standard EN 61326-1:2006 EN 61326-2-1:2006	
Safety	UL 61010-1:2004; CAN/CSA-C22.2 NO. 61010-1-2004; EN 61010-1:2001; IEC 61010-1:2001	

Note^[1]: Typical value.

Note^[2]: Maximum value. 20 ns, single-channel mode, dots display, auto memory depth.

Note^[3]: 500 uV/div is the digital amplification of 1 mV/div. When calculating the DC Gain Accuracy, the full scale should be considered as 8 mV based on 1 mV/div.

Note^[4]: Supporting legs and handle folded, knob height included.

Note^[5]: Standard configuration.

► Ordering Information

	Description	Order Number
Model	DS2072A (70 MHz, 2-analog channel oscilloscope)	DS2072A
	DS2072A-S (70 MHz, 2-analog channel oscilloscope + 2-channel 25 MHz signal source)	DS2072A-S
	MSO2072A (70 MHz, 2-analog channel + 16-digital channel MSO)	MSO2072A
	MSO2072A-S (70 MHz, 2-analog channel + 16-digital channel MSO + 2-channel 25 MHz signal source)	MSO2072A-S
	DS2102A (100 MHz, 2-analog channel oscilloscope)	DS2102A
	DS2102A-S (100 MHz, 2-analog channel oscilloscope + 2-channel 25 MHz signal source)	DS2102A-S
	MSO2102A (100 MHz, 2-analog channel + 16-digital channel MSO)	MSO2102A
	MSO2102A-S (100 MHz, 2-analog channel + 16-digital channel MSO + 2-channel 25 MHz signal source)	MSO2102A-S
	DS2202A (200 MHz, 2-analog channel oscilloscope)	DS2202A
	DS2202A-S (200 MHz, 2-analog channel oscilloscope + 2-channel 25 MHz signal source)	DS2202A-S
	MSO2202A (200 MHz, 2-analog channel + 16-digital channel MSO)	MSO2202A
	MSO2202A-S (200 MHz, 2-analog channel + 16-digital channel MSO + 2-channel 25 MHz signal source)	MSO2202A-S
	DS2302A (300 MHz, 2-analog channel oscilloscope)	DS2302A
	DS2302A-S (300 MHz, 2-analog channel oscilloscope + 2-channel 25 MHz signal source)	DS2302A-S
	MSO2302A (300 MHz, 2-analog channel + 16-digital channel MSO)	MSO2302A
	MSO2302A-S (300 MHz, 2-analog channel + 16-digital channel MSO + 2-channel 25 MHz signal source)	MSO2302A-S
Standard Accessories	Power Cord conforming to the standard of the country	-
	USB Data Cable	CB-USBA-USBB-FF-150
	2 Passive Probes (350 MHz)	RP3300A
	1 set LA Probe (for MSO)	RPL2316
	Quick Guide (Hard Copy)	-
	Resource CD (User's Guide and Application Software)	-
Optional Accessories	Rack Mount Kit	RM-DS2000A
	Passive Probe (500 MHz)	RP3500A
	USB-GPIB Interface Converter	USB-GPIB
	Soft Carrying Bag	BAG-G1
Deep Memory Option	Analog channel: 56 Mpts (single-channel)/28 Mpts (dual-channel) Digital channel: 28 Mpts (8-channel)/14 Mpts (16-channel)	MEM-DS2000A
Advanced Trigger Option	Windows trigger, Nth edge trigger, HDTV trigger, Delay trigger, TimeOut trigger, Duration trigger, USB trigger	AT-DS2000A
Decoding Options	RS232, I2C, SPI Decoding Kit	SD-DS2000A
	CAN Analysis Kit (Trigger + Decoding)	CAN-DS2000A

Warranty

Three-year warranty, excluding probes and accessories.



HEADQUARTER

RIGOL TECHNOLOGIES, INC.

No.156,Cai He Village,
Sha He Town,
Chang Ping District, Beijing,
102206 P.R.China
Tel:+86-10-80706688
Fax:+86-10-80705070

Electronic Measurement
Instrument service and support
email:EMD_support@rigol.com
Chemical Analysis Instrument
service and support email:service.
chem@rigol.com

EUROPE

RIGOL TECHNOLOGIES GmbH

Lindbergh str. 4
82178 Puchheim
Germany
Tel: 0049- 89/89418950
Email: info-europe@rigoltech.com

NORTH AMERICA

RIGOL TECHNOLOGIES,

USA INC.
10200 SW Allen Blvd, Suite C
Beaverton, OR 97005, USA
Toll free: 877-4-RIGOL-1
Office: (440) 232-4488
Fax: (216)-754-8107
Email: info@rigol.com

JAPAN

RIGOL TECHNOLOGIES JAPAN G.K.

Tonematsu Bldg. 5F, 2-33-8 Nihonbashi-
Ningyocho, Chuo-ku,
Tokyo 103-0013
Japan
Tel: +81-3-6264-9251
Fax: +81-3-6264-9252
Email: info-japan@rigol.com

RIGOL[®] is the registered trademark of **RIGOL** Technologies, Inc. Product information in this document subject to update without notice. For the latest information about **RIGOL**'s products, applications and services, please contact local **RIGOL** office or access **RIGOL** official website: www.rigol.com



March 2016