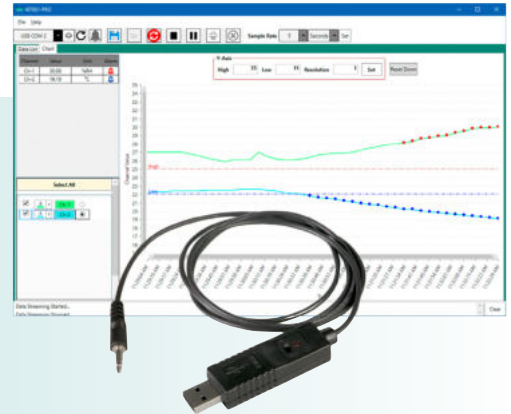


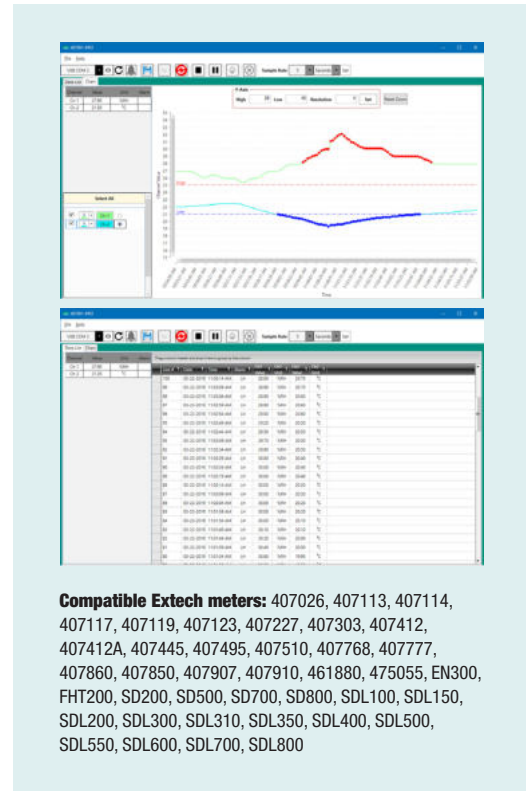
407001-PRO Data Acquisition Software and Cable

Convert specific Extech meters to a datalogger! The 407001-PRO software allows user to live stream data from compatible meters to a PC based computer/laptop while storing the collected data for later use in generating a graph or report. The data can be viewed as a list or on a chart and can be saved as a CSV or TXT formatted file and exported to a Notepad or Excel®. For products that have multi-channels, user can color code each channel. It also has a user programmable High/Low alarms that will display red (above) or blue (below) dots when readings exceed set points on the graph.



Features

- Enables user of specific Extech meters to capture, display, and store readings on a PC
- Programmable Sample Rates (max 6 hrs):
 - Seconds: 1, 5, 10, 15, 30 secs
 - Minutes: 1, 5, 10, 15, 30 mins
 - Hours: 1, 2, 6 hrs
- View data as a list or on a chart and save as a CSV or TXT formatted file
- Import data into Notepad or Excel
- Color code each channel for easy analysis with multi-channel meters
- User programmable High/Low alarms that will alert with red dots (above setpoint) or blue dots (below setpoint) on the graph
- Compatible with Windows® 7, 8, and 10
- Includes Quick Guide for software and driver installation instructions and USB data cable



Compatible Extech meters: 407026, 407113, 407114, 407117, 407119, 407123, 407227, 407303, 407412, 407412A, 407445, 407495, 407510, 407768, 407777, 407860, 407850, 407907, 407910, 461880, 475055, EN300, FHT200, SD200, SD500, SD700, SD800, SDL100, SDL150, SDL200, SDL300, SDL310, SDL350, SDL400, SDL500, SDL550, SDL600, SDL700, SDL800

Ordering

- 407001-PRO..... Data Acquisition Software and Cable
- 407001-USB..... Replacement USB Data Cable and software driver



407001-PRO UPC Code: 793950407028