



## DESKTOP COMPUTER SOLUTION

# ThermoVision EFD™



ThermoVision EFD is an industrial computer that integrates with FLIR thermal imaging cameras, giving you the capability to implement your own Early Fire Detection (EFD) system without the need for programming. Built-in application software makes it easy to mitigate fire risks by identifying problems before the fire starts, and minimizes false alarms with advanced algorithms. Compatible with the FLIR A615, A315, and Ax5, ThermoVision EFD supports up to four cameras for 24/7 coverage of large areas.

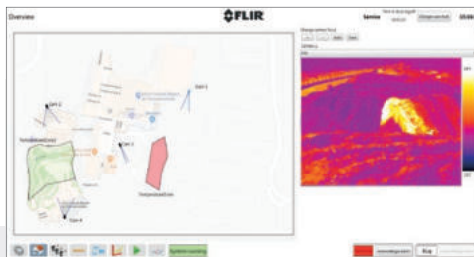
[www.flir.com/products/ThermoVision-EFD](http://www.flir.com/products/ThermoVision-EFD)



### EARLY AND ACCURATE DETECTION

Advanced built-in technology detects temperature anomalies before they become fires, and minimizes false alarms

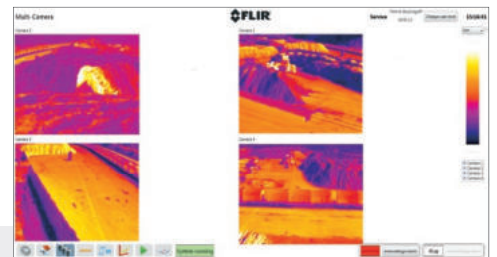
- Temperature levels tracked over time to detect unusual increases long before they become critical conditions
- Software algorithms minimize false alarms from vehicles and other hot sources
- Combined heat detection and advanced image processing capabilities give early warnings



### 24/7 MONITORING MADE SIMPLE

Ready right out of the box with just limited configuration and no programming needed

- Install up to 4 cameras in a flexible combination of FLIR's GigE compatible cameras for Industrial Safety applications
- Quickly define events and find recorded video for a specific event by customizing alarms
- Add a video wall and view live image streams and results with multi-tab screen solution



### COUNTER FIRE RISKS OVER LARGE AREAS

Protect assets and equipment from fire risks, and improve safety for everyone in your facility

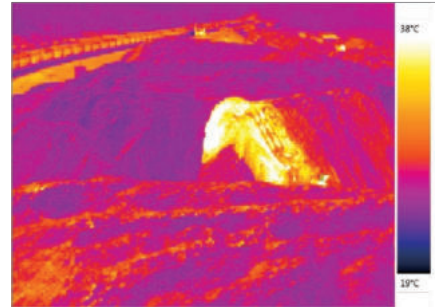
- Keep an eye on your assets 24/7 with cameras that can measure accurate temperatures—even in total darkness
- Generate warnings and alarms when temperatures exceed a certain limit
- Enable personnel to make informed decisions to prevent fire risks

## SPECIFICATIONS

Desktop Computer P/N	T199722	T199724
Maximum cameras supported	2	4
CPU	Intel i7	
Operating system	Windows 7, embedded	
Early fire detection software	ThermoVision EFD	
System memory	8 GB	
Solid state drive	32 GB for OS and EFD software	
USB	4 × USB 3.0, 2 × USB 2.0 in the front	
Video disk storage	2 TB	
LAN	2 × GbE RJ45	
Display output	1 × HDMI, 1 × DVI, 1 × DisplayPort	
Audio	1 × line out, 1 × line in	
<b>System data</b>		
Power requirements	24 V DC, 150 W	
Power unit	External PSU, 100 – 240 V AC, 50 – 60 Hz, 160 W	
Operation temperature	5°C – 40°C (41°F – 113°F)	
Operational humidity	10 – 90%	
Dimensions	328 × 310 × 69 mm (12.91 × 12.20 × 2.72 in)	
Weight	5.60 kg (12.34 lb)	
<b>Packaging Information</b>		
Contents	Desktop computer unit, quick start guide, power supply, Schuko power cables, network cable	

## Key Features

- Compatible with FLIR A615, A315, and Ax5
- Supports up to four cameras
- Advanced imaging algorithms for hands-off operation
- Color-coding of heat signals make temperature readings easy to understand
- Powerful functions for alarms, events, and playback



Specifications are subject to change without notice.  
For the most up-to-date specs, go to [www.flir.com](http://www.flir.com)

**CORPORATE HEADQUARTERS**  
FLIR Systems, Inc.  
27700 SW Parkway Ave.  
Wilsonville, OR 97070  
PH: +1 877.773.3547

**NASHUA**  
FLIR Systems, Inc.  
9 Townsend West  
Nashua, NH 03063  
USA  
PH: +1 866.477.3687

**LATIN AMERICA**  
FLIR Systems Brasil  
Av. Antonio Bardella, 320  
Sorocaba, SP 18085-852  
Brasil  
PH: +55 15 3238 7080

**CANADA**  
FLIR Systems, Ltd.  
920 Sheldon Court  
Burlington, ON L7L 5K6  
Canada  
PH: +1 800.613.0507

[www.flir.com](http://www.flir.com)  
NASDAQ: FLIR

Equipment described herein is subject to US export regulations and may require a license prior to export. Diversion contrary to US law is prohibited. Imagery for illustration purposes only. Specifications are subject to change without notice. ©2018 FLIR Systems, Inc. All rights reserved. 10/04/18

18-1710-INS-AUT



The World's Sixth Sense®