

FOTRIC

Sense the Digital Future

Compact Model Professional Experience

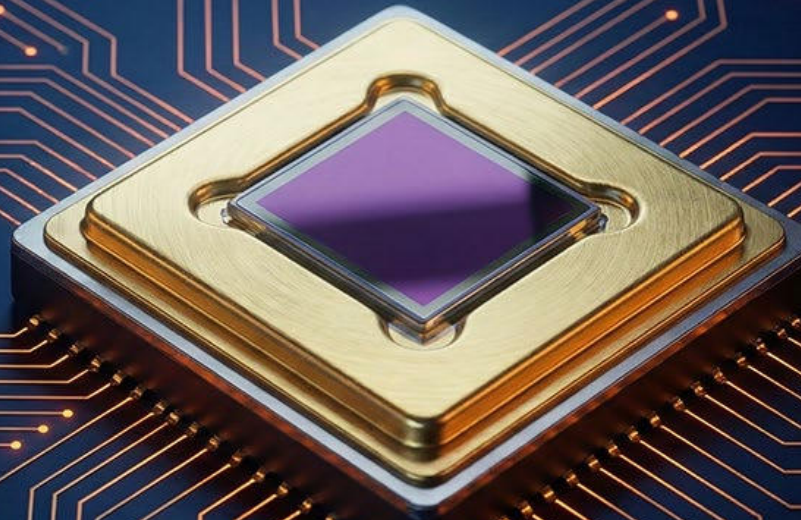
FOTRIC TK5 Kit

Real Sensor · For Real Professionals



Real Sensor

- A ceramic-packaged detector, professional benchmark for accuracy and detail
- A true 320×240 infrared detector, ensuring durability, accuracy, and reliability in demanding industrial environments



Real Professional

- With an IFOV of 2.67 mrad, it's capable of capturing finer temperature differences and achieving more accurate imaging
- 5-megapixel industrial-grade digital camera; Images will remain clear even in report
- 3.5-inch IPS LED touchscreen display with Gorilla explosion-proof glass

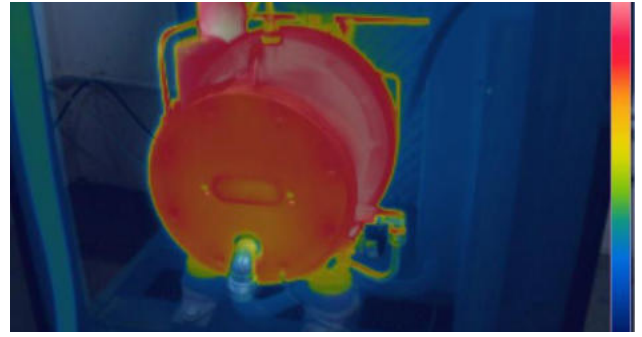


Five Professional Edges



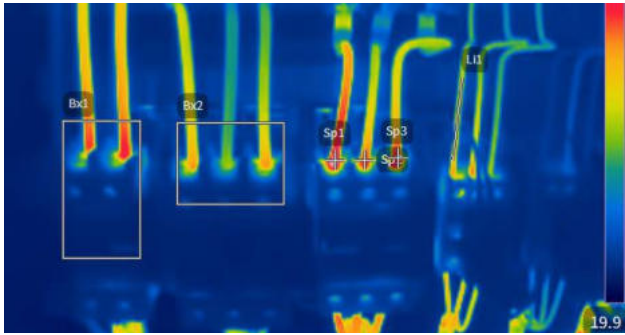
Professional Display Screen

3.5-inch, 640 x 480 pixels, IPS LCD touch display



T-DEF® Blend Mode

Exclusive T-DEF® visible-light temperature measurement with infrared transparency adjustable from 0%–100%, automatically aligned with IR imaging.



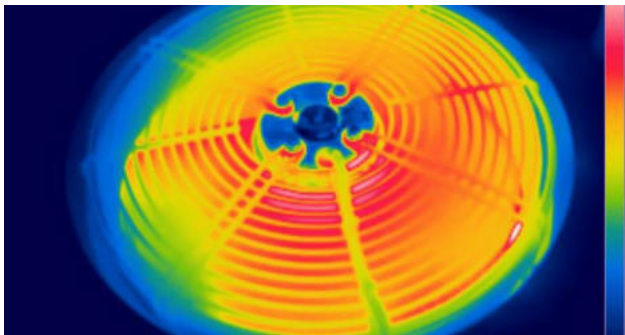
Versatile Measurement Tools

Supports 20 measurement points, 10 measurement boxes, and 10 measurement lines, covering complex scenes far beyond comparable products.



Measurement Parameter Compensation

Full parameter correction including emissivity, ambient temperature, reflected temperature, and IR window transmittance, ensuring research-grade measurement accuracy.



High Refresh Rate

30 Hz high-frame-rate real-time imaging, smooth and lag-free, capturing transient temperature rises and dynamic targets.

Features

Lightweight Design

Integrates easily into a toolkit or can be carried on the belt—effortless portability.

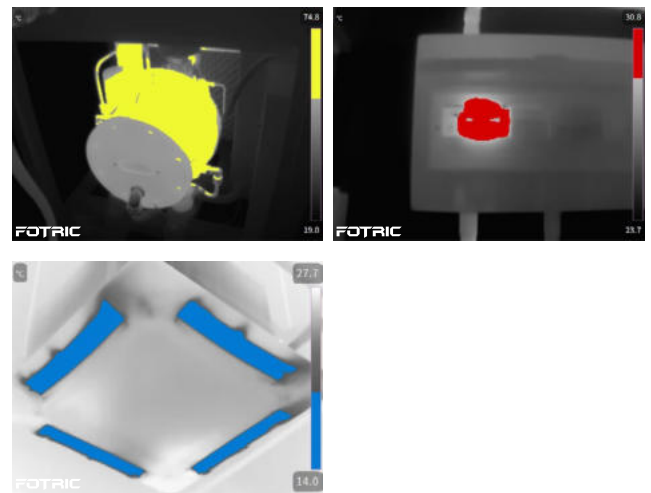
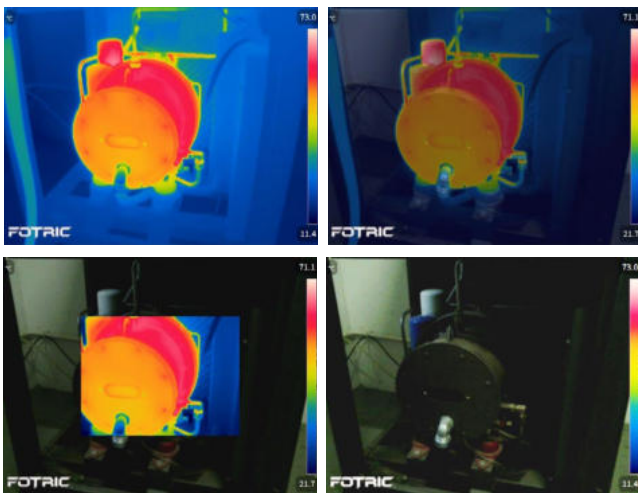


Image Modes

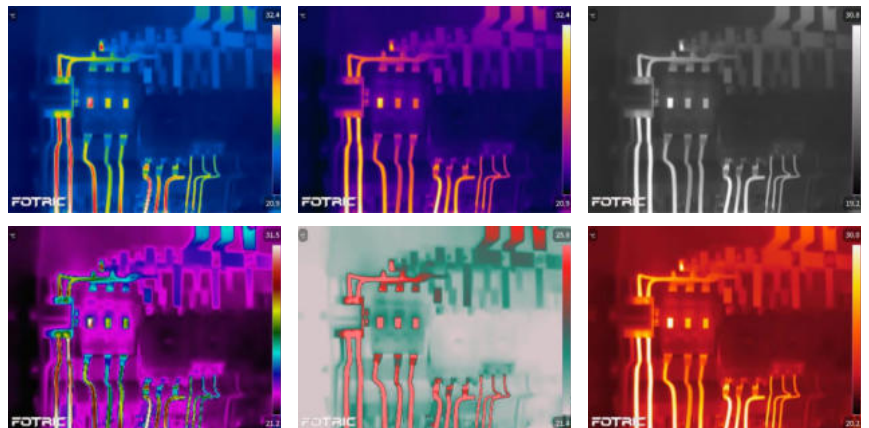
Switch freely between infrared detection, blend mode, picture-in-picture overlay, and visible-light mode for more intuitive diagnostics.

Color Alarm

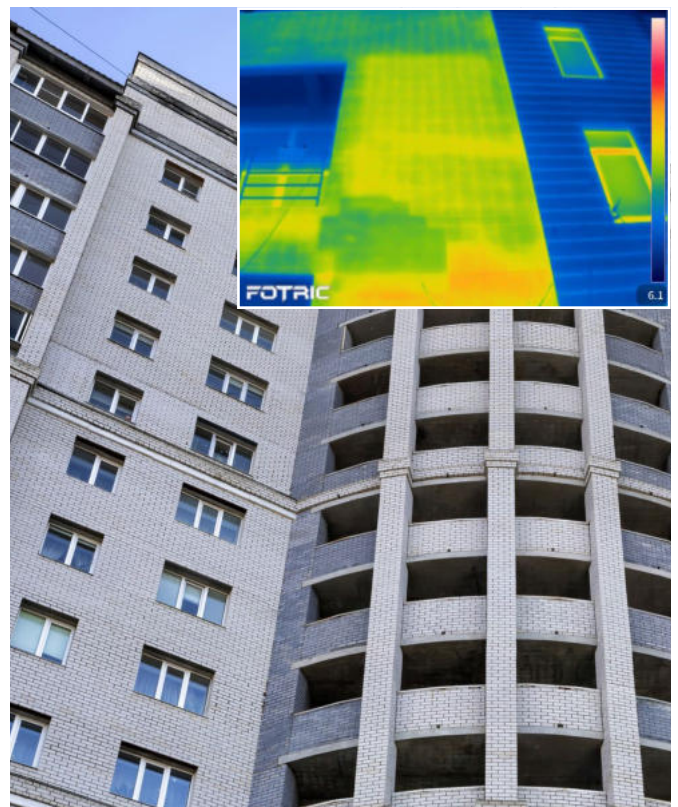
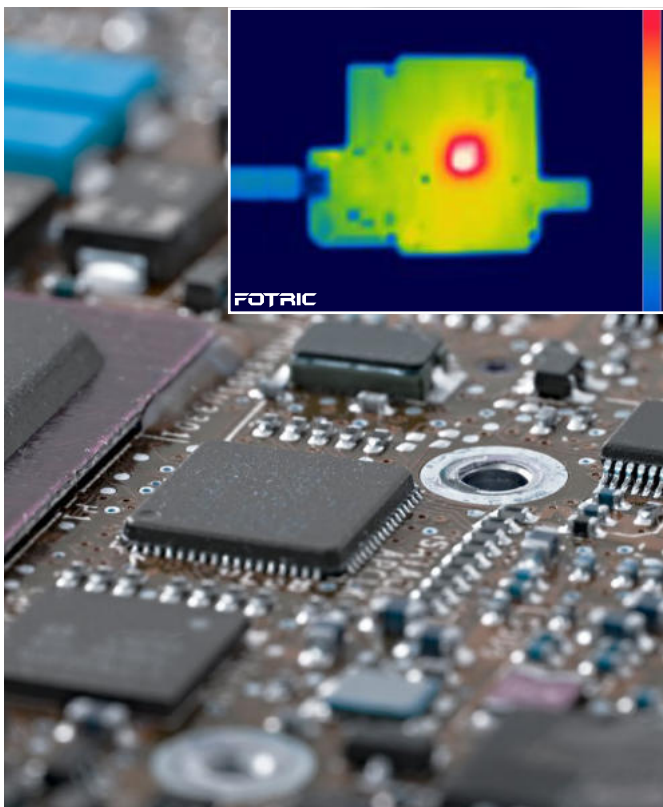
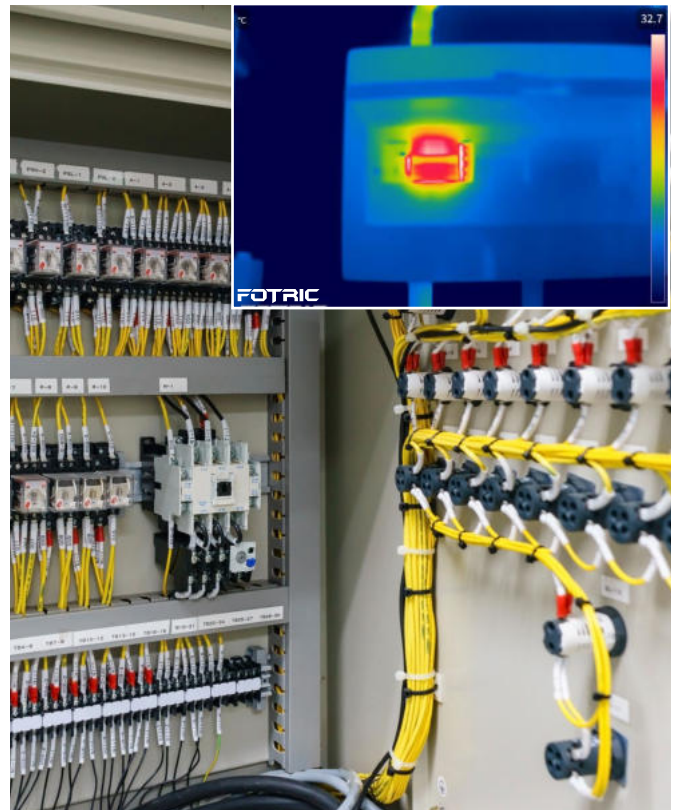
Instantly highlight over-temperature, under-temperature, and temperature range anomalies, so irregularities are obvious at a glance.

Palettes

Six professional color palettes flexibly highlight temperature differences, making hidden issues immediately visible.



Applications



TK5 Kit Enhanced Package Configuration

Durable hard carrying case & soft carrying bag

- Industrial-grade shock-resistant design
- Custom-molded internal structure to ensure safe transport of the main unit and accessories
- Suitable for frequent travel / outdoor inspection scenarios



Lithium Batteries × 2

- Standard configuration includes two 3.6V / 5000mAh batteries
- Single battery operating time \geq 4 hours
- Significantly improves all-day inspection capability



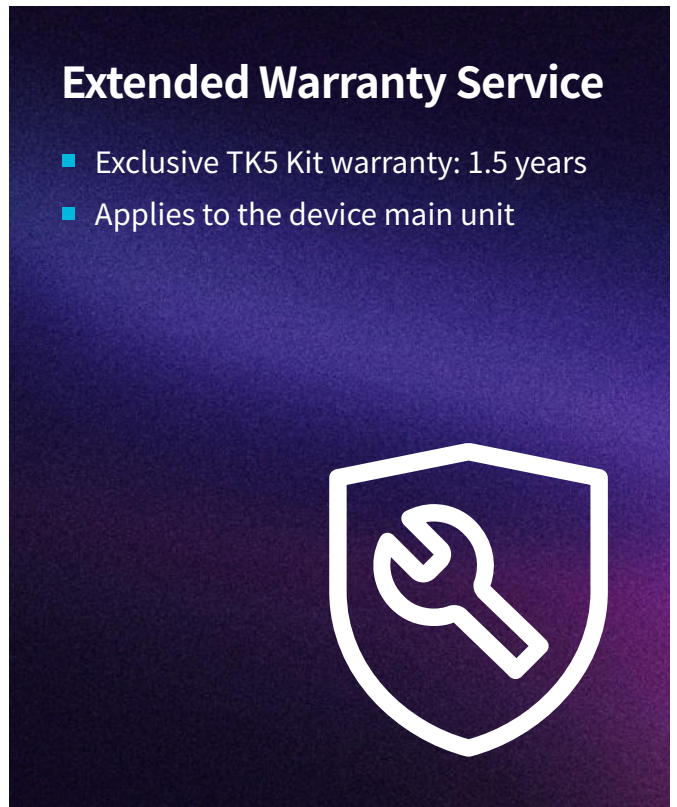
Wearable Belt Clip

- Allows the device to be securely attached to a belt or tool pouch
- Enhances on-site mobility and reduces the risk of accidental drops



Extended Warranty Service

- Exclusive TK5 Kit warranty: 1.5 years
- Applies to the device main unit



Specifications

| Features | |
|----------------------------|---|
| Image Frame Rate | 30Hz |
| Measurement Spot | 20 |
| Measurement Line | 10 |
| Measurement Area | 10 |
| Image Mode | Thermal image, Digital camera, Picture in Picture & T-DEF® blend |
| T-DEF® | Support, thermal and visible light image blend, transparency 0% ~100% |
| T-TWB® | Support histogram thermal color display |
| Basic Parameters | |
| Infrared Resolution | 320×240 |
| IR Detector Type | A ceramic-packaged detector, uncooled FPA infrared detector |
| Thermal Sensitivity (NETD) | 40mk(0.04° C)@30° C(86 °F) |
| Detector Pitch | 12μm |
| Spectral Range | 8-14μm |
| Field of View (FOV) | 49° ×37° |
| Spatial Resolution (IFOV) | 2.67mrad |
| Minimum Imaging Distance | 0.4m |
| Focus Mode | Focus free |
| Complete Temperature Range | -20°C ~450°C (-4~842 °F) |
| Accuracy | ± 2°C (3.6 °F) or ± 2 % , whichever is greater (ambient temperature at 15~35° C(59~95 °F) , target object temperature >0° C, calibration at 1 meter) |
| PC Software | AnalyzIR® |
| Display Screen | 3.5 inch Touch Screen |
| Palettes | 6 Palettes |
| Digital Camera | 5 MP industrial camera |
| Storage Card | TF card, 32GB max capacity |
| File Format | Radiometric thermal photo(JPEG.), digital camera photo |
| Battery Type | Rechargeable Li-ion, 3.6V, 5000mAh |
| Battery Operating Time | ≥ 5 hours |
| Language | English |

Standard Configuration

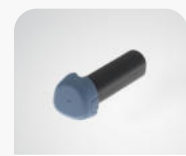
Main unit, rechargeable lithium battery ×2, charging dock, power adapter, USB Type-C to USB cable, 32G TF card, belt clip, calibration certificate, quick start guide, packing list, soft carrying bag, hard carrying case

Versatile Power Source

Shared battery with FOTRIC compact acoustic imaging camera.



FOTRIC TDx series



Same Battery

FOTRIC
Sense the Digital Future