

# Power supply rejection ratio measurement (PSRR)

With a Rohde & Schwarz oscilloscope



## Your task

Power supply design engineers often face the challenge of measuring the power supply rejection ratio or power supply ripple rejection (PSRR) of their design. The PSRR is an important parameter to indicate the power supply's output stability. It provides information about the influence of input voltage variations on the stability of the output voltage.

## Rohde & Schwarz solution

Easily and quickly analyze low frequency response on your oscilloscope with the R&S®RTx-K36 frequency response analysis (Bode plot) option. Characterize the frequency response of a variety of electronics, including passive filters and amplifier circuits. Measure the control loop response and power supply rejection ratio of switched-mode power supplies. The R&S®RTx-K36 option uses the oscilloscope's built-in waveform generator to create stimulus signals

ranging from 10 Hz to 25 MHz. Measuring the ratio of the stimulus signal and the output signal of the DUT at each test frequency, the oscilloscope plots gain logarithmically and phase linearly.

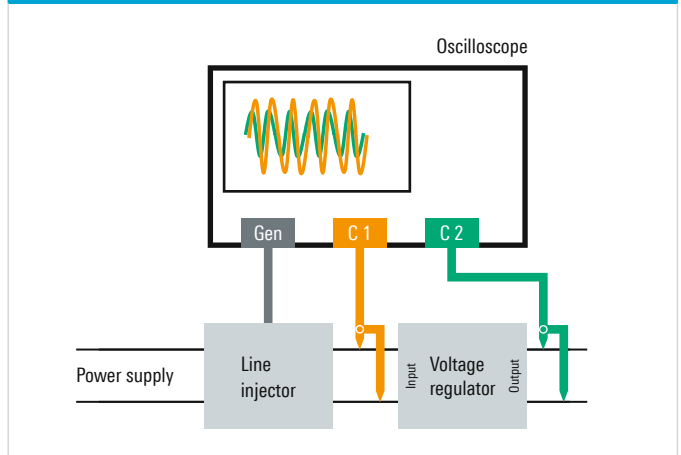
The R&S®RTx-K36 option allows you to measure the power supply rejection ratio and characterize the transition of the regulator system to the regulated output.

## Measurement setup

The PSRR can be measured by applying a sinusoidal ripple to the supply voltage and measuring the gain from the input to the output of the regulator.

A line injection transformer, such as Picotest's J2120A, is required to ensure that the injected signal is isolated and does not induce any DC bias.

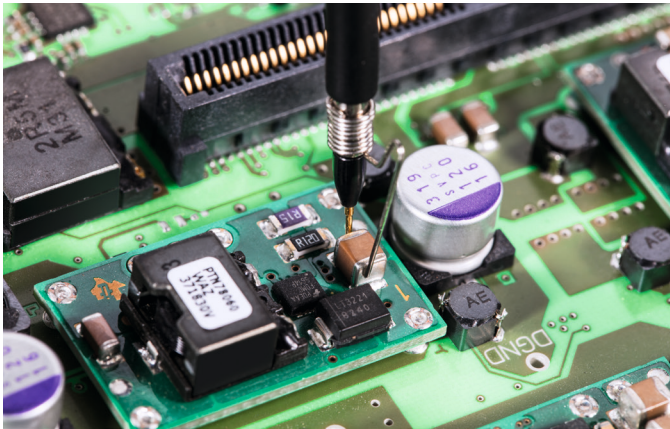
## Measurement setup for PSRR



## Probing

Good probes are a prerequisite in order to perform good PSRR measurements. For example, the peak-to-peak amplitudes of the  $V_{out}$  signal can be very small due to the high rejection ratio of the DC-to-DC converter under test. This requires the use of probes with a higher dynamic range. Although most oscilloscopes usually come with 10:1 passive probes, the use of 1:1 passive probes on the output signal improves the dynamic range. Rohde & Schwarz recommends the R&S®RT-ZP1X 1:1 passive probes with 38 MHz bandwidth for this application.

Reducing the length of your probe's ground connection minimizes ground loop inductance. The standard ground lead of your probe can sometimes act as an antenna and amplify unwanted switching noise. If there is a ground post near the  $V_{in}$  and  $V_{out}$  test points, you should not use a long ground lead. Use the ground spring of the R&S®RT-ZP1X probe to shorten the ground connection. This will provide a good low-noise ground for your measurement.



Using a ground spring will provide the best signal-to-noise ratio for your power supply rejection ratio measurement

### Device setup

After connecting the oscilloscope to the circuit under test, the measurement can be started easily:

- Set start and stop frequency between 10 Hz and 25 MHz and determine the generator output level.
- Set the points per decade to improve and modify the resolution of your acquisition. The oscilloscope supports up to 500 points per decade.
- Profile the amplitude of the generator output (up to 16 steps) to suppress the noise behavior of the circuit under test.
- Press run to start your measurement. The measurement results are plotted as gain/phase over frequency. Set your markers to your point of interest.

### Measurement results

The curves displayed in the Bode plots represent the transition of the regulator system to the regulated output. The graph shows the gain over frequency. Drag markers to the desired positions directly on the plotted trace. A legend displays the coordinates of the markers.



### PSRR measurement

View the results in a table. The measurement results table provides detailed information about each measured point (frequency, gain and phase shift). When using markers, the associated row of the result table is highlighted. For reporting, quickly save screenshots, table results or both to a USB device.

### Summary

Oscilloscopes are the primary measurement tools used today by engineers to test and characterize their power supply designs. The R&S®RTx-K36 frequency response analysis (Bode plot) option provides a low-cost alternative to low frequency network analyzers or dedicated stand-alone frequency analyzers.

### Ordering information

Base unit	Type	Order No.	Option	Order No.
Oscilloscope, 70 MHz, 2 channels	R&S®RTB2002	1333.1005.02	R&S®RTB-K36	1335.8007.02/03
Oscilloscope, 70 MHz, 4 channels	R&S®RTB2004	1333.1005.04		
Oscilloscope, 100 MHz, 2 channels	R&S®RTM3002	1335.8794.02	R&S®RTM-K36	1335.9178.02/03
Oscilloscope, 100 MHz, 4 channels	R&S®RTM3004	1335.8794.02		
Oscilloscope, 200 MHz, 4 channels	R&S®RTA4004	1335.7700.04	R&S®RTA-K36	1335.7975.02/03
38 MHz passive voltage probe, 1:1, 55 V	R&S®RT-ZP1X	1333.1370.02		

### Rohde & Schwarz GmbH & Co. KG

Europe, Africa, Middle East | +49 89 4129 12345  
 North America | 1 888 TEST RSA (1 888 837 87 72)  
 Latin America | +1 410 910 79 88  
 Asia Pacific | +65 65 13 04 88  
 China | +86 800 810 82 28 | +86 400 650 58 96  
 www.rohde-schwarz.com  
 customersupport@rohde-schwarz.com

R&S® is a registered trademark of Rohde & Schwarz GmbH & Co. KG  
 Trade names are trademarks of the owners  
 PD 5216.4362.92 | Version 01.01 | December 2018 (sk)  
 Power supply rejection ratio measurement (PSRR)  
 Data without tolerance limits is not binding | Subject to change  
 © 2018 Rohde & Schwarz GmbH & Co. KG | 81671 Munich, Germany



5216436292