

R&S®NPA101 POWER METER

Compact power meter for AC/DC load and standby current characterization

Description

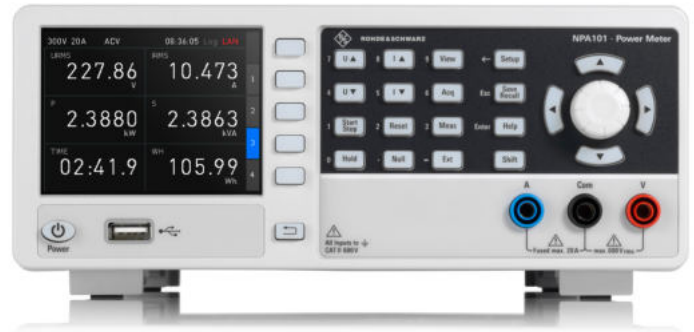
The R&S®NPA101 comes with a brilliant QVGA color display (320 × 240 pixel) that can simultaneously display up to 10 user-configurable measurement results with a refresh rate of 10 measurements per second.

The instrument has a basic accuracy of 0.05%. Signals are acquired from DC to 100 kHz with a sampling rate of 500 ksample/s. Current and voltage are displayed with 16 bit resolution.

The R&S®NPA101 logging function lets users store measured data with a timestamp in .CSV format for a nearly unlimited period of time. Screen content can be saved to a USB flash drive at the push of a button.

Key facts

- ▶ Power measurement range: 50 μ W to 12 kW
- ▶ Analog bandwidth: DC to 100 kHz
- ▶ Sampling rate: 500 ksample/s
- ▶ 16 bit resolution for current and voltage
- ▶ Basic accuracy: 0.05%



Flyer
Version 02.00

ROHDE & SCHWARZ

Make ideas real



SPECIFICATIONS IN BRIEF

Specifications in brief

Analog bandwidth	DC to 100 kHz
Basic accuracy	0.05% of reading
Display resolution	5 digits, 10 updates/s
Input impedance	2 M Ω
Basic measurement functions	active power, apparent power, reactive power, lambda performance factor, phase jump, frequency, voltage (RMS and average), current (RMS and average), total harmonic distortion, energy, data logging
Display and resolution	8.9 cm (3.5") TFT (color), 320 × 240 pixel (QVGA)
Mains nominal voltage	100 V to 115 V/230 V at 50 Hz to 60 Hz
Maximum power consumption	35 W (meas.)
Operating temperature range	+5°C to +40°C
Storage temperature range	-25°C to +60°C
Dimensions	222 mm × 97 mm × 291 mm (8.74 in × 3.82 in × 11.46 in)
Weight	approx. 3.25 kg (7.16 lb)

All specifications refer to a sine reference signal, PF = 1, voltage to ground = 0 V, analog filter deactivated, digital filters activated and are valid for measurement values > 1% of measurement range.

ORDERING INFORMATION

Designation	Type	Order No.
Power meter, DC to 100 kHz	R&S®NPA101	3657.0562.02

Rohde & Schwarz GmbH & Co. KG
www.rohde-schwarz.com

Rohde & Schwarz training
www.training.rohde-schwarz.com
Rohde & Schwarz customer support
www.rohde-schwarz.com/support

R&S® is a registered trademark of Rohde & Schwarz GmbH & Co. KG
Trade names are trademarks of the owners
PD 3608.3226.32 | Version 02.00 | February 2024 (sk)
R&S®NPA101 Power Meter
Data without tolerance limits is not binding | Subject to change
© 2019 - 2024 Rohde & Schwarz GmbH & Co. KG | 81671 Munich, Germany